

Summary of the Product

- You now have access to the lucrative rare game breeding market without paying the **high** costs of:
 - The initial purchase price of a game farm
 - Fencing-off game breeding camps
 - Permanent staff
 - Monthly running cost of a game farm

- You partner in a professional relationship with us insofar:
 - Sourcing high quality genes in animals
 - Assisting in permit applications
 - Game Transport and insurance advice
 - Optimizing your return on Investment when selling your game

- You rent a game breeding camp on a prime game farm and the game that you buy privately, or on an auction, remains 100% yours. The offspring also remains 100% yours.

- Your game is professionally managed on your behalf:
 - According to high industry standards and management programme
 - By an experienced game manager and staff
 - Well respected veterinary services
 - Supplementary and nutritional feeding
 - Disease and parasite control
 - Regular manure laboratory testing

- You also have access to up-market accommodation on the game farm to visit and inspect your game

- If required, each Investor will have the private opportunity to hunt plains game when visiting the farm during hunting season

- The game farm is perfectly situated in an ecotourism hub and between Zebula, Mabalingwe and Mabula and 1,5 hours drive from Pretoria – Perfect for the whole family with various amenities

Game Species

Game Species to choose from for your Breeding Camp:

- Sable Camp– Fully rented and not available
- Roan Camp– Available
- Black/Saddleback Impala Camp - Available on a Breeding Programme – request more information
- Golden Wildebeest Camp– Available on Breeding Programme – request more information
- Blesbuck, Springbuck , Oryx Camp - Available
- Nyala -Fully rented and not available
- 1 Other Camp – Available and as per request

The Breeding Camp System and Layout

Camps are laid out in the shape of a wagonwheel. The benefit of this layout is the communal holding and work area which can be used to hold animals from where they can be swapped to different camps if and when it is necessary. The central area is sufficient to be used as a temporary holding boma (50 metres in diameter). Water and fodder are provided just outside the central area, in the narrowest part of the camp so that the animals can be conditioned to drink and feed here. The 8 internal camps are fenced with 21-strand, 2.4m high game fencing. The Northern, Eastern, Western and Southern border fences of the camp system are fully electrified with Jakkals wire 1.2m high, with 40cm on the ground and secured with trip wire.

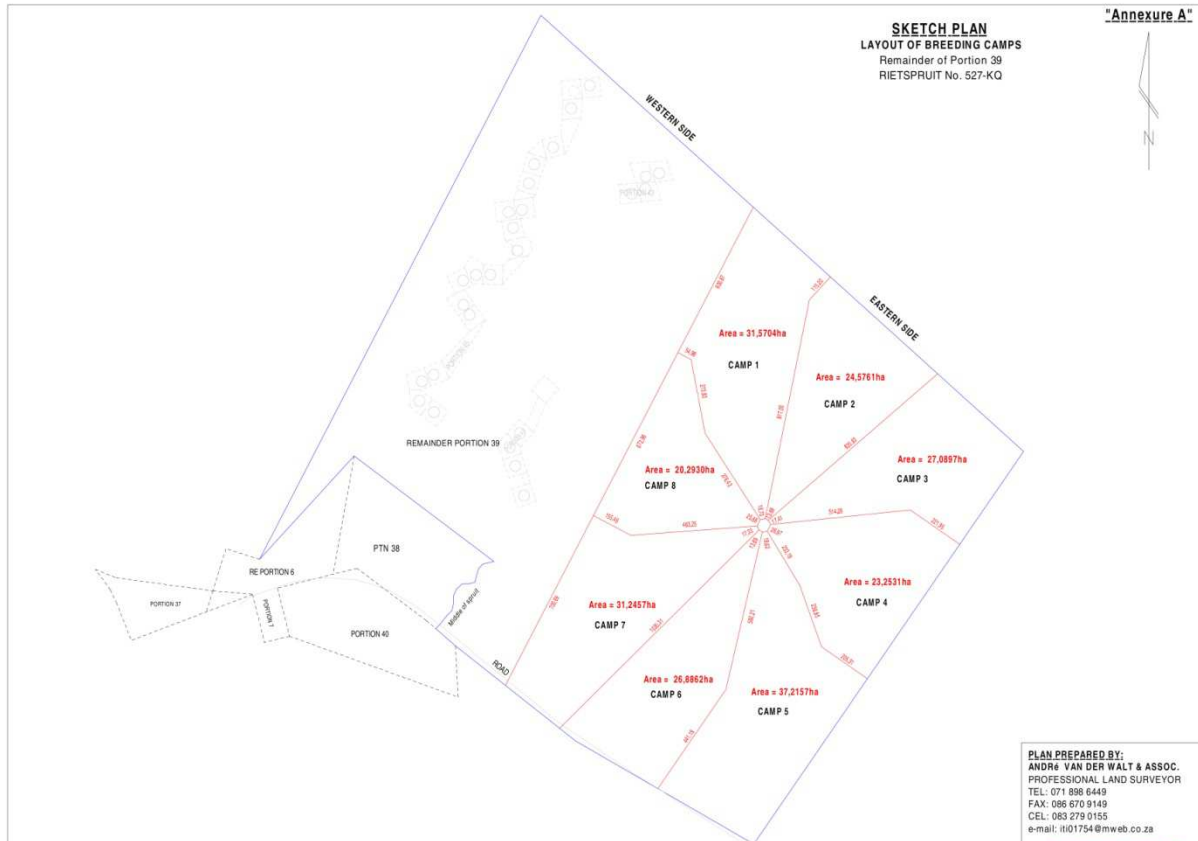
The following species and quantities have been determined for the 7 different camps:

			Max # Game	Max # Male	Min # Female	Min Female Colour Variant	Max Female Split Genes
	Hectares	Species					
Camp 1	31.6	Roan	20	1	5	N/A	N/A
Camp 2	24.5	Available on request					
Camp 3	27.1	Ram / Bul camp	35	Below	N/A	N/A	N/A
Camp 4	23.3	Sable	15	1	5	N/A	N/A
Camp 5	37.2	Blesbuck and other	30	1 per specie	N/A	4 per specie	6 per specie
Camp 6	26.9	Black/Saddleback Impala Programme	30	1	N/A	5	24
Camp 7	31.2	Golden Wildebeest Programme	25	1	N/A	4	20
Camp 8	20.3	Nyala	40	2	10	N/A	N/A

Bul / Ram Camp 3 – max male animals allowed

Camp 1	3	Roan
Camp 2	4	Op Versoek
Camp 3	35	Total of 7 camps
Camp 4	3	Sable
Camp 5	3/4/2	Blesbuck/Springbuck/Oryx
Camp 6	5	Impala
Camp 7	4	Wildebeest
Camp 8	7	Nyala

The Camp Layout



Monthly Rent per Camp

		Monthly Rental Cost (Excluding VAT)
Camp 1	Roan	19 900
Camp 2	Future Breeding programme – not available	18 100
Camp 3	Ram / Bul Camp	Included in each camps rental
Camp 4	Sable	17 400
Camp 5	Blesbuck, Oryx and Springbuck	22 400
Camp 6	Black/Saddleback Impala breeding programme	18 700
Camp 7	Golden Wildebeest breeding programme	19 700
Camp 8	Nyala	15 800

Expenses & Responsibilities

- Expenses and responsibilities for DJ Farmer:
 - All day-to-day operational activities for Game Breeding
 - Property Taxes and Electricity
 - Security
 - Salaries and Benefits of Farm Manager
 - Wages and Benefits of Farm Workers
 - Human Relations with Employees
 - Continuous communication with Investors
 - Maintenance Costs involving the Farm Operations:
 - Fences and Gates
 - Veld Management
 - Roads
 - Boreholes, pumps and pipes
 - Ground erosion and Storm water management
 - Public road reserves clearing
 - Feeding and water stations
 - Vehicles and fuel
 - Fire Protection
 - Various other assets
 - All day-to-day operations surrounding your accommodation
 - Hunting services during your week in the hunting season
 - Continuous updates and communication with each Investor

- Expenses and responsibilities for yourself:
 - Certain expenses remain constantly a variable cost due to:
 - Condition of the animal
 - Weather circumstances and other nature factors
 - Species and quantity in your investment choice
 - Price changes in the market
 - For reasons mentioned above, some expenses can only be projected. It might be that the actual costs are lower or higher, however we believe that each Investor will understand that each possible situation must be addressed immediately in order to minimise any possible risks to your investment.
 - Each Investor will be responsible for the costs related to:
 - Initial Feeding, Watering and Dipping troughs
 - Relocation, capturing or tagging of game, if required
 - Veterinary Services, if required
 - Insurance, if required

Cost of supplementary feeding used by his/her game (*may vary depending on Manager's decision on site*). For guideline purposes we disclose the norm as follows:

<i>in grams per animal per day</i>	Roan	Camp 2 Dependable	Sable	Average of Blesbuck, Oryx, Springbuck	Black Impala	Golden Wildebeest	Nyala
Game Pellets							
• Summer (6 mths)	500		500	150	150	500	250
• Mid (2 mths)	750		750	275	275	850	425
• Winter (4 mths)	-	-	-	400	400	1200	600
Lucerne							
• Mid (2 mths)	-	-	-	200	200	500	300
• Winter (4 mths)	-	-	-	600	600	1200	800
Feed Mix							
• Mid (2 mths)	T1 - 0.75% weight		T1 - 0.75% weight	-	-	-	-
• Winter (4 mths)	T1 - 1.5% weight		T1 - 1.5% weight	-	-	-	-
Salt, Phosphates, Protein Licks	Annually		Annually	Annually	Annually	Annually	Annually
Deworming & parasite vaccines	Quarterly		Quarterly	Annually	Annually	Annually	Annually
Manure Laboratory Testing	Quarterly		Quarterly	Annually	Annually	Annually	Annually

Note: the above supplementary feeding is according to high-standard diet program and our application. Should any Investor wish to deliver his own supplementary feed, we would store such in our store until delivery to breeding camp

Sable and Roan only

Feed Mix	kg
Roan & Sable	
Lucerne	300
Harmony Chop	300
Molasses	40
Full Fat Soya	25
Feed Lime	2.5
Coarse Salt	2.5
Phosphate	2.5
Per Mix	672.5

Game Pellets - combination of:

- Epol Grazer Game Cube - 12% Protein
- Epol Antelope Cubes - 16% Protein

Projected cost of supplementary feed per adult animal:

	Summer		Mid		Winter		Annually	Average
	per animal	6 mths	per animal	2 mths	per animal	4 mths		
	per day	Oct - Mar	per day	Apr & Sept	per day	May - Aug		
Roan - ave 300kg	R 2.15	R 387.00	R 11.59	R 695.50	R 16.25	R 1 949.50	R 3 031.99	R 252.67
Future costs dependable								
Sable - ave 275kg	R 2.15	R 387.00	R 10.91	R 654.88	R 14.89	R 1 787.04	R 2 828.92	R 235.74
Blesbuck, Oryx, Springbuck avg	R 0.65	R 116.10	R 3.88	R 232.83	R 9.68	R 1 161.13	R 1 510.06	R 125.84
Black Impala	R 0.65	R 116.10	R 3.88	R 232.83	R 9.68	R 1 161.13	R 1 510.06	R 125.84
Golden Wildebeest	R 2.15	R 387.00	R 10.45	R 627.18	R 21.20	R 2 544.26	R 3 558.44	R 296.54
Nyala	R 1.08	R 193.50	R 5.88	R 352.72	R 13.21	R 1 585.17	R 2 131.39	R 177.62

(Reduce for younger animals)

The Farm

- To date we have achieved a great deal of progress on the farm since December 2014. We have shaped the farm from scratch. Firstly we took the approach of establishing a brilliant farm and only then approach the market to buy our product. We do not sell our product to you based on what we **are** going to be done. Our product is established
 - Farm management plan
 - Constructed an entrance to the farm
 - Employment of staff
 - Constructed staff accommodation and communal bathroom facilities
 - Secured all four borders of the farm with new electrified fencing
 - Constructed two barns/sheds and the Boma system for the breeding camps
 - Purchased the necessary farm vehicles and implements
 - Established an additional borehole that supplies the breeding camps
 - Construction of the lodge for accommodation – 85% completed.
 - Earthmoving equipment and machinery:
 - Implemented seven rain water drinking holes for game on the western portion
 - Created a road network on the wholefarm
 - Storm water drainage implemented
 - Built a mountain/look-out area
 - Cleared area in front of lodge to enhance views
 - Cleared areas of unwanted vegetation between our new border fences and public roads.
 - Bush Clearing and unwanted vegetation of 220 hectares camp system

Visiting your Investment

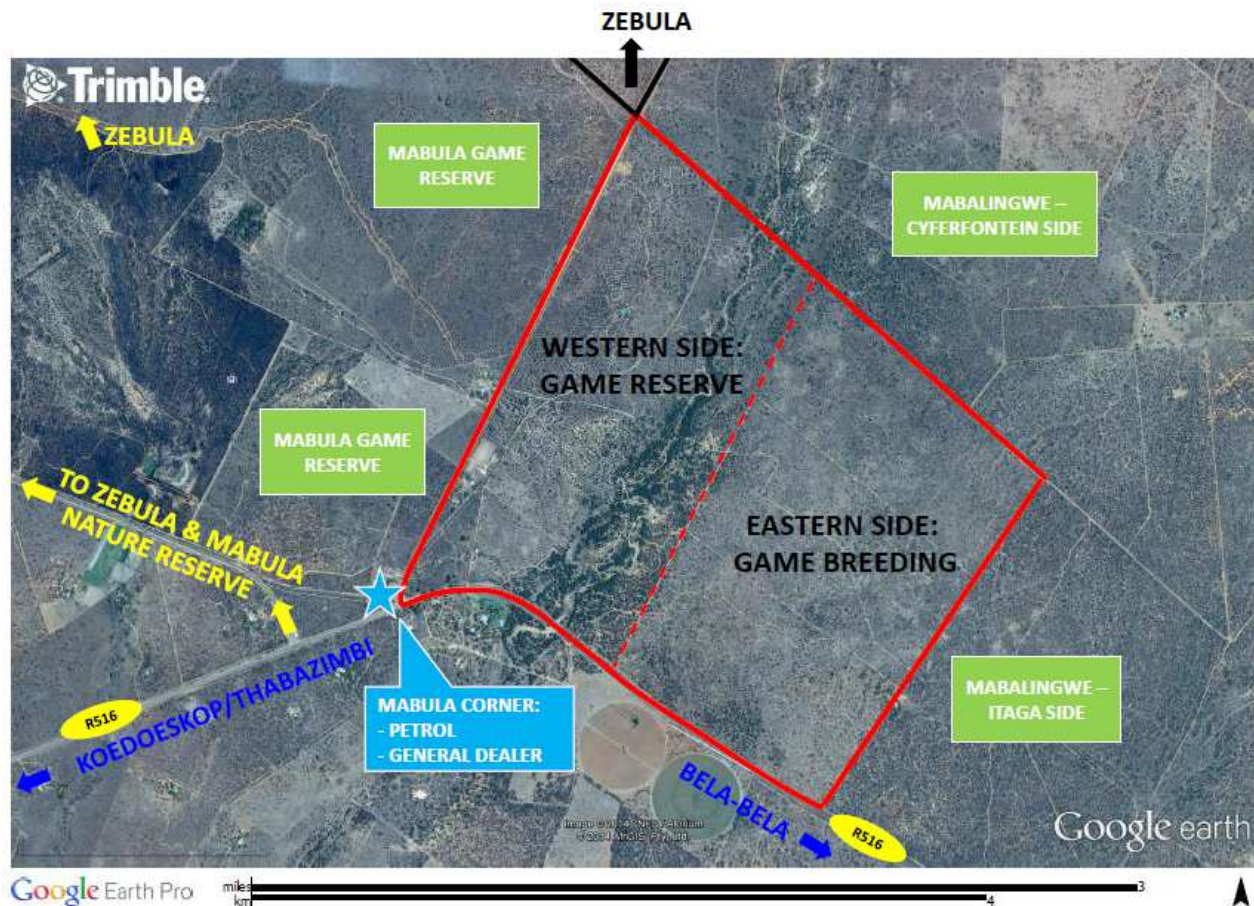
- 3 x Chalets and communal Boma with cooking facilities are available for each Camp owner and for 5 visits during the year. It varies between mid-week, weekend and full week. Each Chalet is of high standards and include a King-size bed, 2 single beds in a loft (ideal for children), a full bathroom featuring an outdoor shower, and a coffee station..
- The time allocation for each Investor's stay for 2016 are as follows:

	Midweek	Weekend	Full week
	Tuesday 2pm – Friday 10am	Friday 2pm – Sunday 11am	Tuesday 2pm – Sunday 11am
Camp 1	26 - 29 Jan 2016	19 - 21 Feb 2016	3 - 8 May 2016
Camp 2	2 - 5 Feb 2016	26 - 28 Feb 2016	10 - 15 May 2016
Camp 4	9 - 12 Feb 2016	4 - 6 Mar 2016	17 - 22 May 2016
Camp 5	16 - 19 Feb 2016	11 - 13 Mar 2016	24 - 29 May 2016
Camp 6	23 - 26 Feb 2016	29 - 31 Jan 2016	31 May - 5 Jun 2016
Camp 7	1 - 4 Mar 2016	5 - 7 Feb 2016	7 - 12 Jun 2016
Camp 8	8 - 11 Mar 2016	12 - 14 Feb 2016	14 - 19 Jun 2016

Year 2: Starts October 2016 ends August 2020

Time allocation as above will be distributed to all Investors at the end of June 2016 for the year and every year thereafter

- You will have the opportunity to hunt plains game on the western portion of the farm, during your full week which will always be during the hunting season.
- The farm is perfectly situated in an ecotourism hub, with many attractions to visit and enjoy, including:
 - Mabalingwe Nature Reserve
 - Zebula Country Club and Spa
 - Mabula Nature Reserve
 - De Wildt Cheetah Wildlife Ranch
 - Walking with Elephants
 - Elements Private Golf Reserve
 - Many other noteworthy and interesting places in the area
- Part of your investment is the experience of farm life and everything that goes with it. Sharing this experience with family and friends adds to your quality of life – no price can be put on such experiences and memories.



Our opportunity holds three benefits

1. We have the most cost-effective opportunity that enables you to breed wild game directly. You won't spend your capital on a farm, infrastructure, vehicles and workers, but only on game that yield a good return. The return on your investment will be much higher than first going the farming route and buying game afterward.
2. We offer an excellent investment as well as access to our lodge for relaxation and pleasure with your family and friends.
3. You also get exclusive hunting opportunities with your closest friends and family.

The Way Forward

- The perfect time for establishing a new heard of game is during September and October which coincides with our original projected date of completion of this passionate project.
- 5 Year lease with each Investor
- A deposit that equals 3 x the monthly camp rent payable to Attorneys Trust Account
- Monthly rents, feeds and expenses of your breeding camp only commence during the month of October 2015
- Building a healthy and professional relationship for the future



Part of the DJ Group



When taking into account the Capital Outly of Game and should this Investment Opportunity be within your financial capability, contact the owner of DJ Farmer, Freder  de Jager directly to discuss the way forward.

083 395 0113

fredere@djfarmer.co.za